



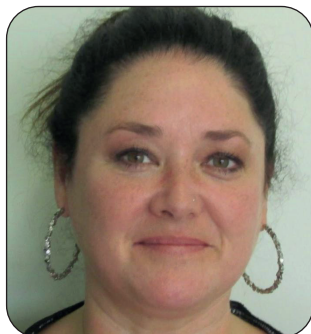
Safeguarding team

If you have any concerns about a child's or adult's safety, welfare or general well-being, please ensure that you speak with a member of our safeguarding team **straightaway**.



Steven Foster

Deputy Designated
Safeguarding Lead



Jeannie Bell

Pastoral Lead



Caroline Towler

Designated Safeguarding
Lead



Kerry Lee

Safeguarding Governor



Andy Roberts

Estates and Facilities
Manager, Central
Services Team

ADULTS

Concerns about adults and leadership

SAFE ENVIRONMENT

Concerns about
health, safety and
premises

SAFE CHILDREN

Concerns about children's welfare

LOOKED AFTER CHILDREN

Concerns about
'looked after' children