

Friday 18th March 2022- Newsletter 21

## A message from Miss Towler...

Dear Parents and Carers,

It has been another busy week in school with lots of great learning going on. It has been great to end the week with the children coming into school in bright and colourful clothing with coins aplenty to help raise money for those that are in need of help and support. This year Comic Relief is donating a percentage of the money raised to support the people of Ukraine. Thank you for helping us raise a fantastic £136.84, which will no doubt help make a difference to many lives.

In this week's newsletter I am sharing the feedback we received from our Parent Voice Questionnaire. Thank you to those that completed our survey helping us receive 30 questionnaires in total. There was lots of lovely feedback and also constructive feedback too. This is valuable for us as it helps us see what is working well and what could make our school even better. We are passionate about making a difference to the children in our school and when it is recognised by families it is always appreciated. Please see the survey results at the end of this newsletter and there will be a follow up piece next week unpicking some of the feedback further. I will leave you with a couple of responses from questionnaires which definitely made us smile when I discussed this with the staff team:



- I love the 'family' feel of the school and I feel that my child thrives there. I always highly recommend it to other people.
- The morning check ins have proved to be very important and I think it's a great way for the children to be aware of other people's feelings. My child clearly feels safe to be able to talk about any worries/ problems and this has been shared with us and enabled us to support my child at home and in the wider community. The after school clubs have been great this year. Both my children were surprised how much they liked dance. They really enjoyed cricket too. Thank you for everything you all do to make such a wonderful school.

Have a lovely weekend,

Caroline Towler, Headteacher

## Rescheduled - Key Stage One and Two Disco

Don't forget that we have the KS1 and KS2 Disco on Thursday night. Please send in your form and payment to ensure that your child doesn't miss out if you haven't already bought their tickets. Also remember that we will be selling treats as well so the children are welcome to bring some spare coins with them.

**Our school attendance this week is: 96.87%**

**Our school attendance target is 97%.**

**Top team attendance is: Venus Reception: 98.8%**

**Jupiter: 98.5% Saturn: 97.46% Neptune: 93.85%**

**\*As Government guidance states, your child's attendance is**

**compulsory in school and unless they are unwell or isolating; we ask that you ensure they are in school, on time, every day.**



## UPDATED: Dates for your diary for the coming weeks

Please see dates for this term's diary. We will always try to give you as much notice as possible if circumstances mean that dates need amending.

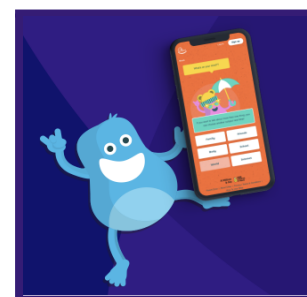


Dates	What's happening at TPA?
Monday 21st March	Parents Evening (No after school Booster Club for Y6 due to Parents Evening)
Tuesday 22nd March	Team Saturn Swimming Session at Tadcaster Swimming Pool
	Extra Curricular KS1 and KS2 Dance Club with Hannah from YDS 3.30pm - 4.30pm
Wednesday 23rd March	TPAC : Mothers Day gifts on sale for £3.50 (see post overleaf)
	Extra Curricular KS1 Art Club with Mrs Brooke 3.30pm - 4.30pm Extra Curricular KS2 Music Club with Mrs Oldfield 3.30pm - 4.30pm
	Parents Evening
Thursday 24th March	Rescheduled: Key Stage One and Two Disco 5pm - 7pm (please see letter shared today)
	Extra Curricular KS2 Drama Club 3.30pm - 4.30pm
Friday 8th April	Break up for Easter Holidays
Monday 25th April	Return to school
Monday 9th May - Friday 13th May	<b>Y6 SATs week</b> - Please do not arrange appointments or holidays during this week for any Y6 pupils.
May 16th May - Fri 27th May	<b>Y2 SAT's will be held throughout May</b> - Please do not arrange appointments or holidays for Y2 pupils.
Monday 6th June	<b>New date: Children not in school due to Queen's Jubilee this year</b>

## Ollee and Me

It's not always easy to get children to open up, and that's where Ollee comes in: to help you have those tricky conversations and to give you and your child extra support when you need it. Click on the link below to find out more.

It can help your child explore feelings around subjects - like school, family, friends and the world - and support conversations about these with you, through connected accounts. [Ollee and Me](#)



## Science Parent Voice

Please click on the link below to share how you feel about our Science Curriculum. Mr Ramzan, our Science Lead, is keen to find out more about how your child feels about Science and what you know about the Science learning going on in school.

Thank you. [Science Parent Voice](#)

## Parent Voice - Tadcaster Primary Academy - Spring 2022.

Please see the responses below from the Parent Voice Questionnaire that was shared with all families in February. Thank you to all those who completed the questionnaire. It is always helpful to see how families feel about what school is offering to your children. Next week we will share some more of the written feedback from the survey.

<b>30 responses</b>	
<b>90% and above</b>	
<b>89% and below</b>	

### 1. My child is happy at this school

Strongly agree	Agree	Disagree	Strongly disagree	Don't know
22	7	0	0	1
73.3% SA	23.3% A			3%
97% positive				

### 2. My child feels safe at this school

Strongly agree	Agree	Disagree	Strongly disagree	Don't know
21	9	0	0	0
70% SA	30% A	0	0	0
100% Positive				

### 3. The school makes sure its pupils are well behaved

Strongly agree	Agree	Disagree	Strongly disagree	Don't know
18	11	1	0	0
60% SA	36.6% A	3%		
97% positive				

**4. My child has been bullied and the school dealt with the bullying quickly and effectively**

Strongly agree	Agree	Disagree	Strongly disagree	Don't know	My child has not been bullied
0	3	0	1	0	26
0	10% A	0	3%	0	86.6%
96% positive					

**5. The school makes me aware of what my child will learn during the year**

Strongly agree	Agree	Disagree	Strongly disagree	Don't know
15	14	0	0	1
50% SA	46.6% A	0	0	3%
96% positive				

**6. When I have raised concerns with the school they have been dealt with properly**

Strongly agree	Agree	Disagree	Strongly disagree	Don't know	I have not raised concerns with the school
10	7	1	0	0	12
33.3% SA	23.3% A	3%	0	0	40%
97% positive					

**7. Does your child have special educational needs and/or disabilities (SEND)?**

Yes	No
6	24
20%	80%

**If you have answered yes to the question above, how strongly do you agree with this statement: 'My child has SEND, and the school gives them the support they need to succeed.'**

Strongly agree	Agree	Disagree	Strongly disagree	Don't know
3	3			
50% SA	50% A			
100% agree				

**8. The school has high expectations for my child**

Strongly agree	Agree	Disagree	Strongly disagree	Don't know
13	14	0	0	3
43.3% SA	46.6% A	0	0	10%
90% positive				

**9. My child does well at this school**

Strongly agree	Agree	Disagree	Strongly disagree	Don't know
19	10	1	0	0
63.3% SA	33.3% A	3%	0	0
96% positive				

**10. The school lets me know how my child is doing**

Strongly agree	Agree	Disagree	Strongly disagree	Don't know
12	14	2	0	2
40%	46.6%	6%	0	6%
87% positive				

**11. There is a good range of subjects available to my child at this school**

Strongly agree	Agree	Disagree	Strongly disagree	Don't know
18	10	0	0	2
60%	33.3%	0	0	6%
93% positive				

**12. My child can take part in clubs and activities at this school**

Yes	No
25 - 83.3%	5 - 16.6%

### 13. The school supports my child's wider personal development

Strongly agree	Agree	Disagree	Strongly disagree	Don't know
17	8	1	0	4
56.6% SA	26.6% A	3%	0	13.3%
83% positive				

### 14. I would recommend this school to another parent

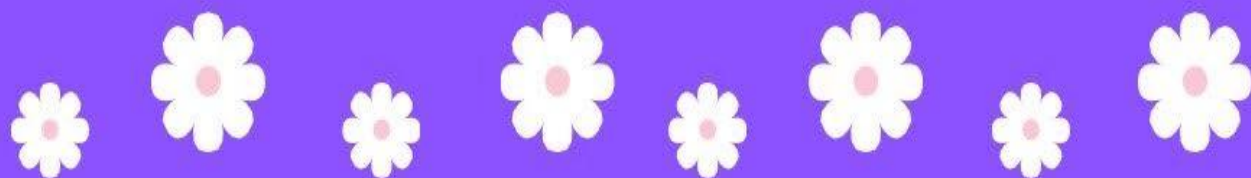
Yes	No
29 - 97%	1- 3%

We can see that Q.10 'The School lets me know how my child is doing' has a slightly lower positive percentage with 87%. As we have our second Parents Evening of the year next week, we are sure that this opportunity to speak with teachers will give you a useful insight into how well your child is doing in school. We will also be sharing a useful targets sheet with parents and carers at this evening as well. We plan to hold another Parent Forum very soon like we did in the autumn term and will look at this further then.

Question 13 received an 83% positive response with 4 families sharing they 'don't know' whether 'The school supports my child's wider development'. Wider personal development is all about developing your child in other ways. We hope that by seeing the information below you will see that these are things we particularly focus on at TPA. Our wellbeing provision and the work that we have done to celebrate diversity are key features of our school. We also love that we are now able to offer specialist Music, Art and Sports teaching which wasn't something that we offered in school in the past. Please see an explanation of the meaning of 'The school supports my child's wider development' below:

- The school's curriculum provides for learners' broader development, enabling them to develop and discover their interests and talents e.g musical, sporting, artistic
- The curriculum and the school's wider work support learners to develop their character - including their resilience, confidence and independence - and help them know how to keep physically and mentally healthy
- At each stage of education, the school prepares learners for future success in their next steps
- The school prepares learners for life in modern Britain by:  
equipping them to be responsible, respectful, active citizens who contribute positively to society: developing their understanding of fundamental British values and appreciation of diversity, celebrating what we have in common and promoting respect.





# TPAC MOTHERS DAY GIFTS

---

Wednesday 23rd March

£3.50 per gift

